



**COBRA**  
STRUCTURES

# APEX SERIES

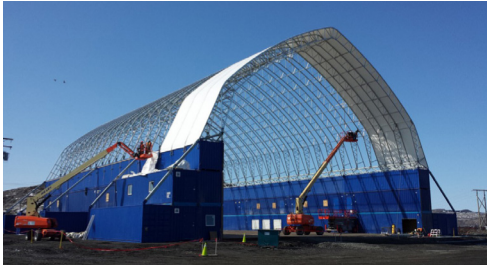
**Maximize Strength and Interior Space**

# Customization Options



## Available from 53' - 100' Wide

The Apex Building Series maximizes interior usable space thanks to its tall side walls. The slightly curved roof profile, sharp peak and standard sidewall legs give the Apex style and character, without sacrificing functionality. Built with thicker trusses for maximum strength, Apex is designed to withstand high winds and heavy snow loads.



- **Several durable foundation options including screw piles and concrete blocks.**
- **Free-span webbed truss building with a fabric cover for maximum storage space.**
- **Expand height of trusses as high as necessary or add interior I-beam legs.**
- **Choose spacing of trusses or use fewer trusses than traditional fabric buildings.**

# The Ideal Choice



## Barns

Permanent Apex buildings allow for ample natural light and superior ventilation. The open layout provides more movement and arrangement options for barns.



## Salt + Sand

Salt and sand can be safely stored and kept dry under our domed Apex fabric structures in convenient, roadside locations at permanent or temporary sites.



## Event Centres

We pre-engineer our Apex buildings to withstand inclement weather and you can incorporate features like fire suppression systems, lighting, and insulation.

# Our Benefits



## Open Interior

No internal posts provides an ease of use and maximum storage capacity in all Apex buildings.



## Durability

Our Apex buildings stand sturdy even in the harshest weather, becoming a great option in high-snow climates.



## Customized Height

Apex buildings can be customized to any height for overhead clearance space to accommodate large machinery.



# COBRA

## STRUCTURES

### CONTACT

1-866-473-1635

[solutions@cobrastructures.com](mailto:solutions@cobrastructures.com)

[www.cobrastructures.com](http://www.cobrastructures.com)

---

Suite 32 West MN Street St.  
Joseph, MN 56374,



[facebook.com/cobraenterprises/](https://facebook.com/cobraenterprises/)



[instagram.com/cobraenterprises/](https://instagram.com/cobraenterprises/)



[linkedin.com/company/cobrastructures/](https://linkedin.com/company/cobrastructures/)



[twitter.com/CobraStructures](https://twitter.com/CobraStructures)